

BLIND PERSONS' ASSOCIATION

6B Panchanantala Road, 2nd Floor, Kolkata - 700029

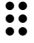
Tel : 033-24605548, 033-24377206

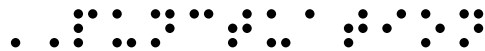
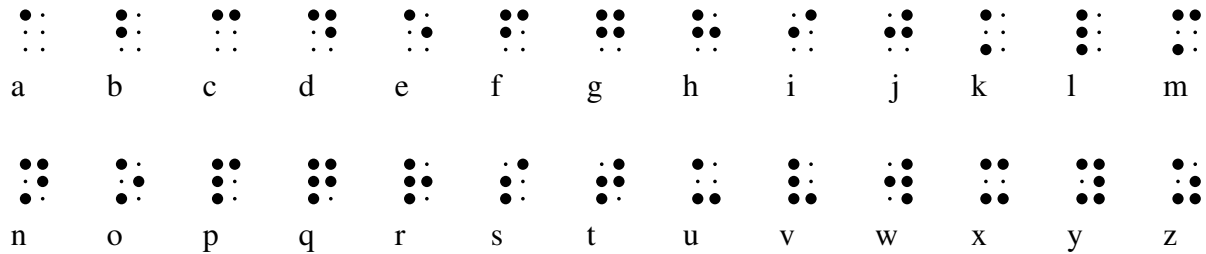
Email : bpaindia@vsnl.net / bpaindia@gmail.com

Web : www.bpa.org.in

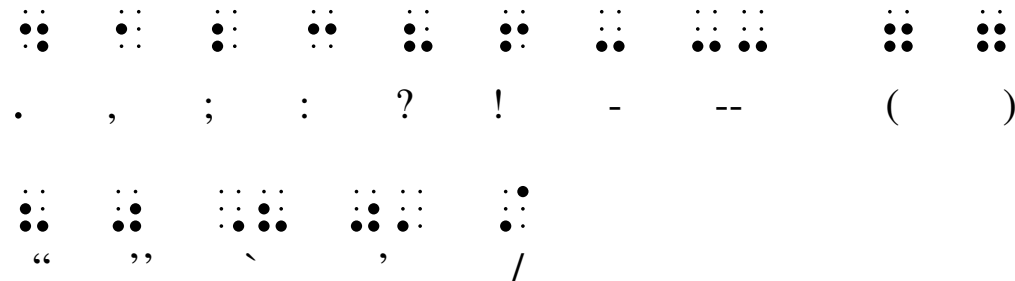


ENGLISH BRAILLE ALPHABET


A braille character is a one of the 63 variations obtained from combination of 6 dots . These 6 dots are placed in two vertical columns. The left column consists of dots 1, 2 and 3 from the top. Similarly the right hand column consists of dots 4, 5 and 6. Both English and Bengali braille alphabets and punctuation marks are provided below:



PUNCTUATION



Notes

1. While writing English, each capital letter should be preceded by a capital sign . If the entire word is to be capitalized and it has more than one character, it should be preceded by two capital signs. Notice the heading at the beginning.
2. Punctuation marks in both English and Bengali are the same.

3. Braille digits 1 to 0 are represented by the the first ten letters of the English alphabet. For writing number, use the number sign (dots 3-4-5-6) $\cdot\cdot\cdot$ before starting a number both in English and Bengali. For example,

1	24	789	2,456
$\cdot\cdot\cdot$	$\cdot\cdot\cdot$ $\cdot\cdot$	$\cdot\cdot\cdot\cdot\cdot\cdot$	$\cdot\cdot\cdot$ \cdot $\cdot\cdot\cdot\cdot\cdot$

4. Start a paragraph with two blank spaces in both languages.
 5. If possible center a heading. If it does not fit on one line, start each line of the heading text on the 4th cell and try to leave as many cells on the right hand side. Use available menu commands when you are writing in a braille word processor.

$\cdot\cdot\cdot$ $\cdot\cdot\cdot$ $\cdot\cdot$ $\cdot\cdot$ $\cdot\cdot$ $\cdot\cdot$ $\cdot\cdot$ $\cdot\cdot$ $\cdot\cdot$ $\cdot\cdot$ $\cdot\cdot$ $\cdot\cdot$ $\cdot\cdot$

$\cdot\cdot\cdot$ $\cdot\cdot\cdot$ $\cdot\cdot$ $\cdot\cdot$ $\cdot\cdot$ $\cdot\cdot$ $\cdot\cdot$

বাংলা বর্ণমালা

স্বরবর্ণ

$\cdot\cdot$ $\cdot\cdot$ $\cdot\cdot$ $\cdot\cdot$ $\cdot\cdot$ $\cdot\cdot$ $\cdot\cdot$ $\cdot\cdot$ $\cdot\cdot$ $\cdot\cdot$ $\cdot\cdot$ $\cdot\cdot$

অ আ ই ঈ উ ঊ ঋ এ ঐ ও ঔ

$\cdot\cdot$ $\cdot\cdot$ $\cdot\cdot$ $\cdot\cdot$ $\cdot\cdot$ $\cdot\cdot$ $\cdot\cdot$ $\cdot\cdot$

ব্যঞ্জনবর্ণ

$\cdot\cdot$ $\cdot\cdot$ $\cdot\cdot$ $\cdot\cdot$ $\cdot\cdot$ $\cdot\cdot$ $\cdot\cdot$ $\cdot\cdot$ $\cdot\cdot$ $\cdot\cdot$

ক খ গ ঘ ঙ চ ছ জ ঝ ঞ

$\cdot\cdot$ $\cdot\cdot$ $\cdot\cdot$ $\cdot\cdot$ $\cdot\cdot$ $\cdot\cdot$ $\cdot\cdot$ $\cdot\cdot$ $\cdot\cdot$ $\cdot\cdot$

ট ঠ ড ঢ ণ ত থ দ ধ ন

প ফ ব ভ ম য র ল ব শ

ষ স হ ড ঢ য ত ং ঃ ঁ ঙ ঞ

বাংলা ব্রলে ি এবং ই, বা ু এবং উ ইত্যাদির জন্য আলাদা

আলাদা অক্ষর নেই--বই, মই, লও শব্দ লিখতে স্বরবর্গটির আগে

অ লিখতে হবে- যেমন,
বই মই লও

ঃ

বাংলা ব্রলে যুক্তাক্ষর লেখার সময় যে অক্ষর দুটি যুক্ত হবে,
তার প্রথমটির আগে ডট 4 বসবে-যেমন,

ব্রহ্মাণ্ড ব্যক্তিস্ব ইন্দ্র

.

বাংলা ব্রলে ঁ অক্ষরের পরে বসবে-যেমন,

চাঁদ

.